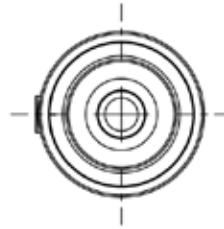
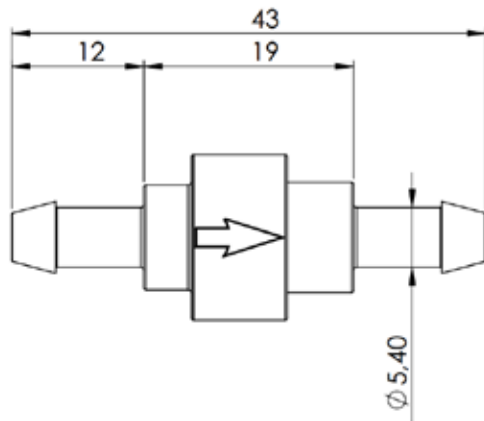
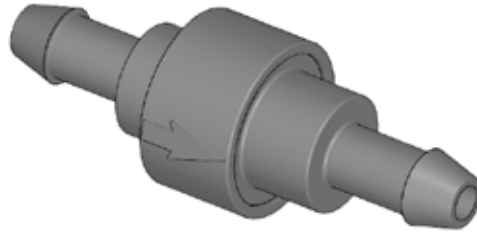




# One way valve

ARTICLE NO: 2121



## Information

Material:	<b>PP</b>
Temperature range*:	<b>-10°C / 130°C</b>
Thermal conductivity:	<b>0.22 W/m.K</b>
Electrical insulation:	<b>Excellent</b>
Pressure drop:	<b>0.2 bar</b>
Tensile force:	<b>45 Mpa</b>

### General resistance

Washing fluid:	<b>Excellent</b>
Ethanol:	<b>Good</b>
Aceton:	<b>Poor</b>

Any ethanol-based fluids containing no acetone that are available on the market may be used as windshield wiper fluid, provided that the mixing ratio and instructions of the manufacturer of the windshield wiper fluid are followed.

\* At temperatures below 0°C, antifreeze has to be added to the wash water.

